



TCMS v2 Automatic Time Synchronization



This tool is for synchronization of TCMS V2 and terminal's clocking times.

Adding in NT Service into your TCMS V2 software ensures constant sync of the time between the software the connected readers.

Step 1

Download the [Auto Time Synchronization II](#)

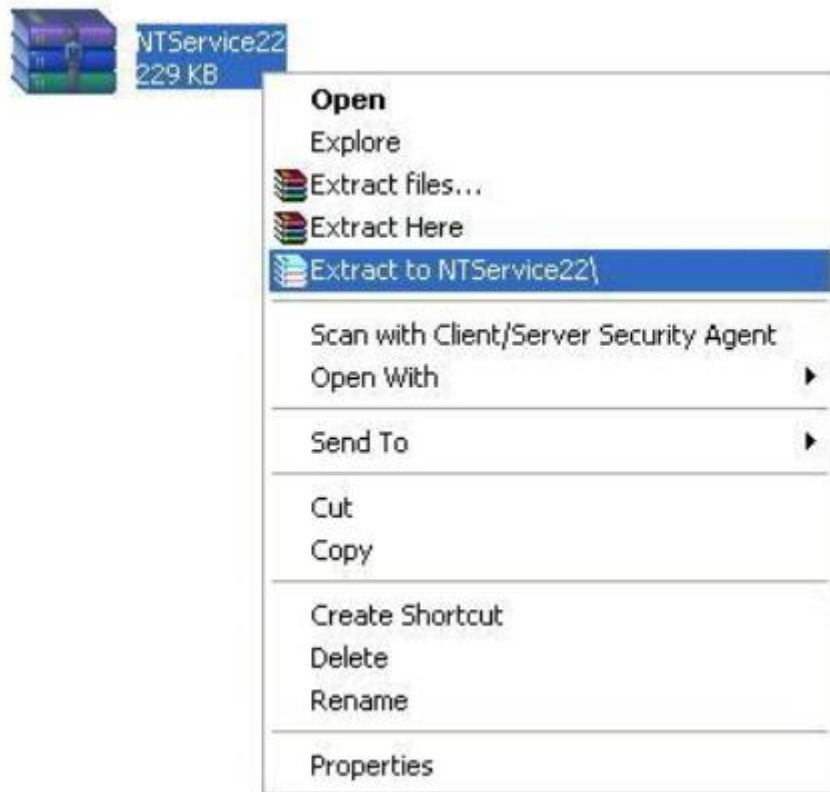
The screenshot shows the FingerTec USA website interface. At the top, there is a navigation bar with links: HOME, PRODUCTS, RESELLER, SUPPORT, and COMPANY INFO. Below this is a search bar and a red button that says "Click here to find the best product for you". To the right of the search bar, there are links for "amazon payments", "Shopping Cart", and "Log In".

On the left side, there is a "CATEGORIES" menu with the following items: TIME ATTENDANCE MODEL, FACE RECOGNITION MODEL, MULTIMEDIA MODEL, ACCESS CONTROL MODEL, RFID CARD MODEL, DOOR LOCK MODEL, ONLINE IDENTIFICATION, SOFTWARE, SUPPORT & TRAINING, and ACCESSORIES. Below this is a "SPECIALS" section featuring a "FACE ID 2" product with a price of \$945.00 (originally \$900.00) and a "Save: 5% off" discount. There are "Add to Cart" and "Details" buttons for this product.

In the center, there is a "Downloads" section. It lists several downloads: "TCMS v2.2.015 (04 March 2011)", "FingerTec Data Processor (09 March 2011)", and "FingerTec TCMSv2 Viewer (07 March 2011)". A red box highlights the link "Automatic synchronizing the time of all connected FingerTec terminals", which is the target for Step 1.

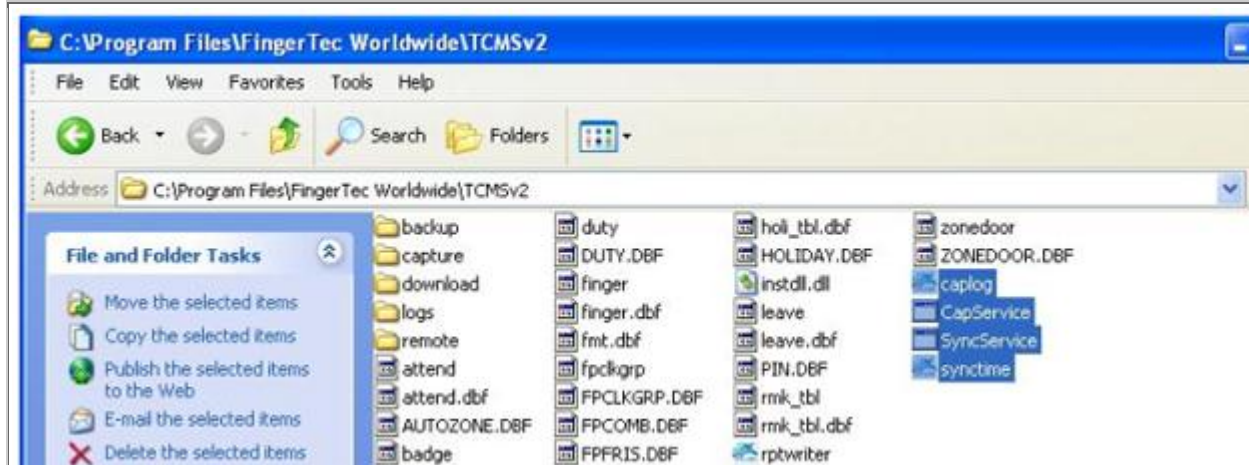
Step 2

Extract the NTService Auto Time Synchronization II and do the followings:



Step 3

Copy all the files named caplog, CapService, SyncService, synctime from the NTService Auto Time Synchronization II folder & paste them into TCMS v2 directory folder.



Step 4

Double click on TCMS V2 software, go to Devices icon and choose Set Terminal Time.

Set Date & Time

Please specify the date and time to be set in the data terminal: -

26/10/2009 16:44:04

Set daily synchronisation timer to automatic synchronise all terminals when PC is powered on: -

0:00 o'clock

Set

Apply

Close

Specify the time when you want the terminal time to be synchronized with the PC without turning on the TCMS v2 software.

And click Apply button.